

# Khudu le kgapetla ya yone

Motshwantshi: Helga Hoveka

Mokwadi: Brigid Comrie

Kotara 2 – Buka e Kgolo 4



Setswana



**GAUTENG PROVINCE**  
EDUCATION  
REPUBLIC OF SOUTH AFRICA

**GGT 2030**  
GROWING GAUTENG TOGETHER

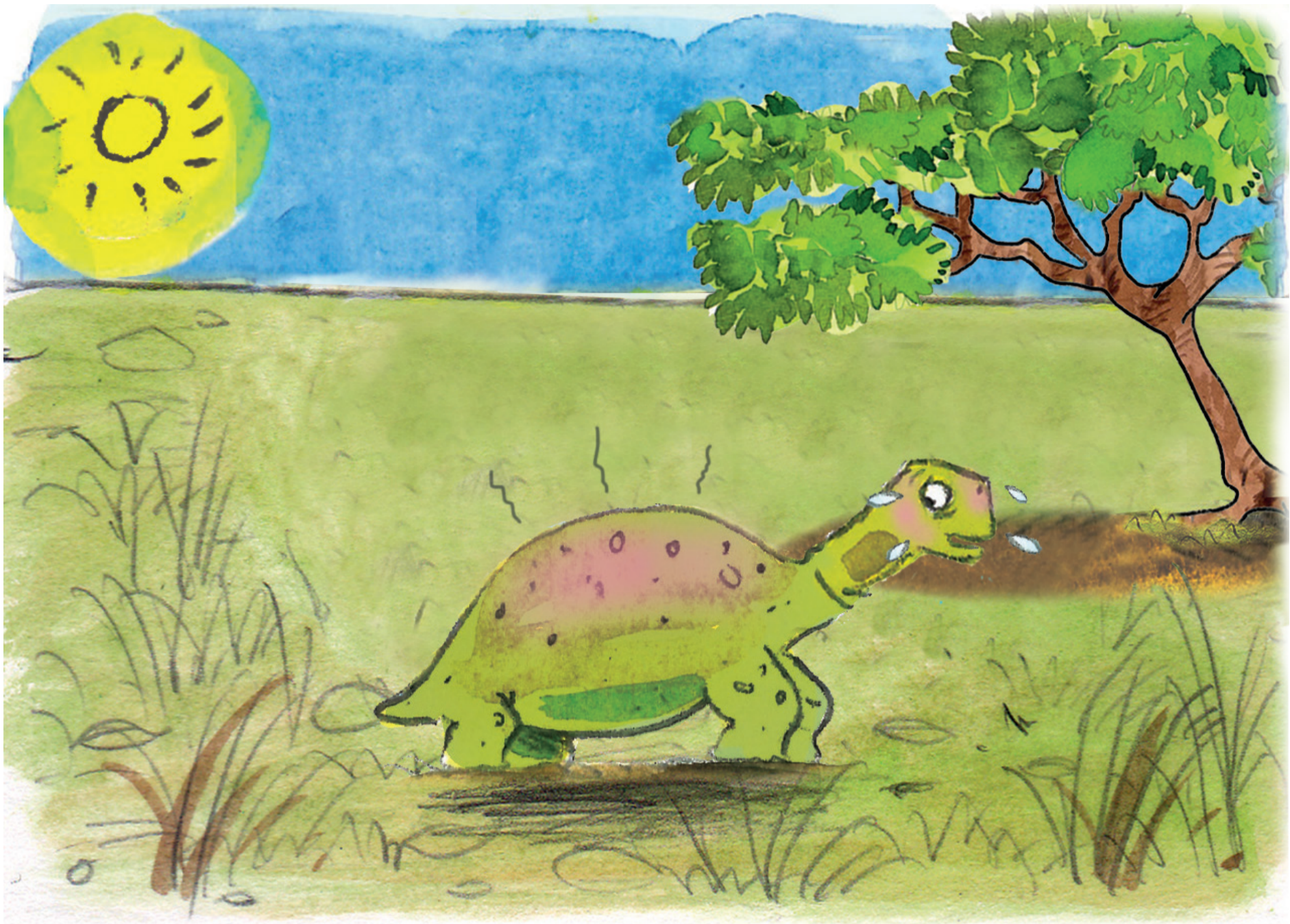


Khudu e e bidiwang Tommy  
e ne e nna e le yosi mo  
tshimong. “Ke eletsa e kete  
ke ka taboga ka lebelo jaaka  
diphologolo tse dingwe,”  
a bua jalo.





Tommy a gagaba a tswa mo  
teng ga kgapetla ya gagwe  
mme a goa a re, “Mponang!  
Ke ka kgona go taboga ka  
lebelo kwantle ga kgapetla  
ya me e e boima!”



Morago ga nakonyana Tommy a tlogela go taboga. O ne a le mogote e bile letsatsi le fisa mokwatla wa gagwe o o boruma. “Ga ke tihole ke sireleditswe ke kgapetla, ka jalo ke tla ikhutsa mo moriting.”



Tommy a utlwa modumo  
kwa loaping mme a bona  
ntsu. “Ke eletsa e kete ke  
ka bo ke na le kgapetla go  
ntshireletsa,” a bua jalo.  
A iphitlha ka bonako mo teng  
ga khuti ya setlhare.

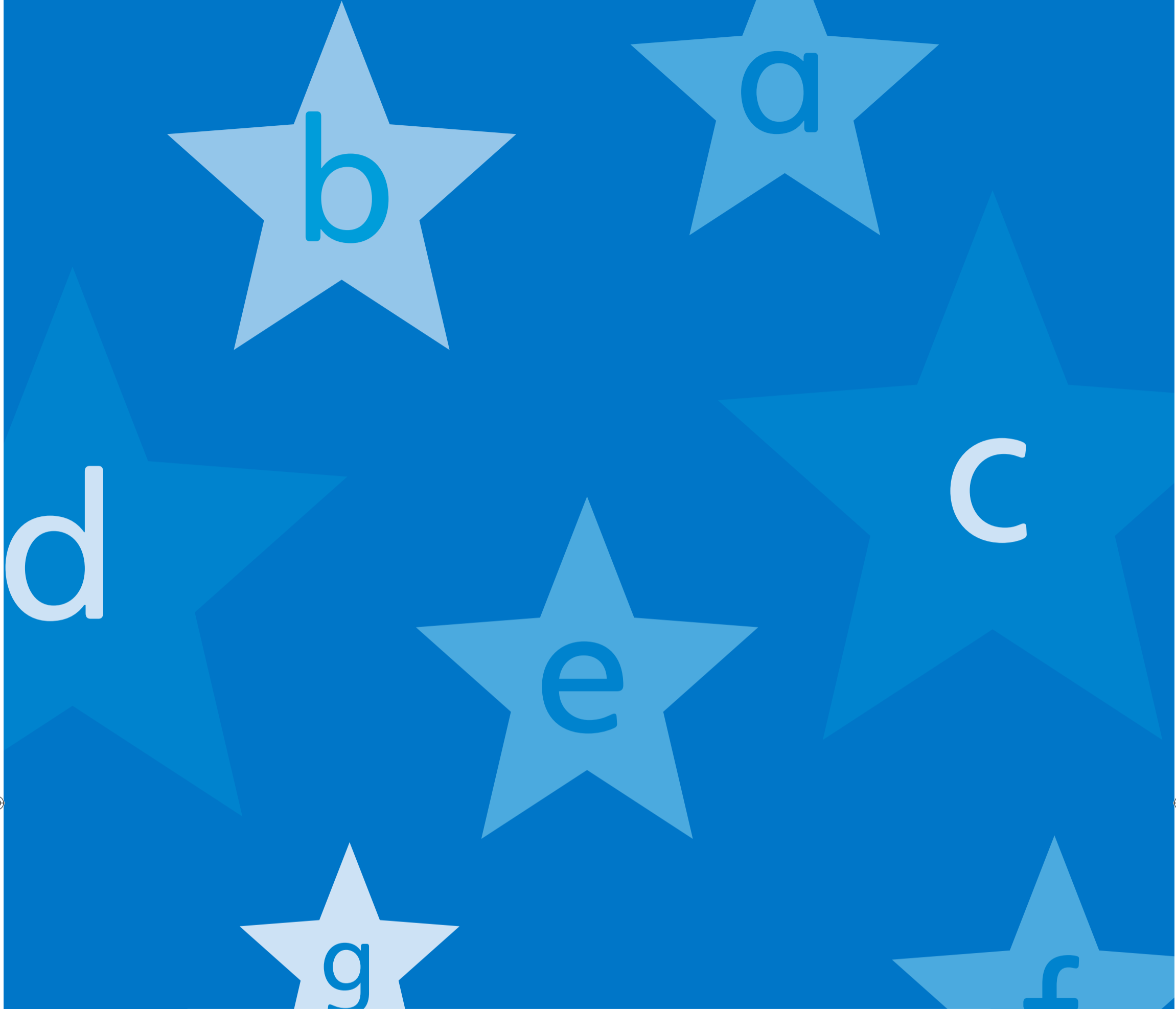


Tommy a simolola go taboga gape. A utlwa tumo ya maru mme a utlwa pula mo mokwatleng. “Ke eletsa e kete ke ka bo ke na le kgapetla go ntshireletsa,” a bua jalo.



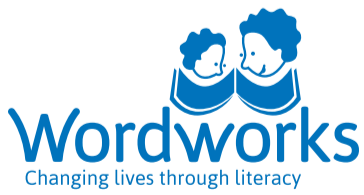


Tommy a gopola kgapetla ya gagwe. A taboga a gagabela mo teng ga kgapetla ya gagwe. “Ga ke kgathale lefa ke sa kgone go taboga ka lebelo,” o ne a ipolelela jalo. “Ke itumelela go bo ke le nna!”



**USAID**  
FROM THE AMERICAN PEOPLE

**ZENEX**  
FOUNDATION



Buka e Kgolo eno e kwadilwe ke Wordworks.  
E kgabisitswe ke Jacqui Botha. E ranotswe ke Peter Mekgwe.  
E tselegantswe ke Peter Mekgwe.

Buka e Kgolo eno e ntsheditswe laesense ke Creative Commons Attribution 4.0 License (<http://creativecommons.org/licenses/by/4.0/>).

